



East Parade | | Ilkley | LS29 8JP

£1,195 PCM



East Parade |
 Ilkley | LS29 8JP
 £1,195 PCM

This spacious terrace offers spacious four bedroomed accommodation with a bathroom and a shower room, all within walking distance of all the town centre amenities and train station.

- Mid Terraced House
- Sitting Room
- Bathroom
- Enclosed Yard to Rear
- Unfurnished
- Four Bedrooms
- Breakfast Kitchen
- Shower Room
- EPC Rating: D
- Available late April

GROUND FLOOR

ENTRANCE HALL

12'5" x 3'2" (3.78 x 0.97)

SITTING ROOM

11'6" x 11'5" (3.51 x 3.48)

BREAKFAST KITCHEN

12'9" x 10'5" (3.89 x 3.18)

SHOWER ROOM

7'0" x 3'5" (2.13 x 1.04)

HALF LANDING

W.C.

5'4" x 2'6" (1.63 x 0.76)

FIRST FLOOR

MASTER BEDROOM

13'10" x 11'5" (4.22 x 3.48)

BEDROOM THREE

9'4" x 5'9" (2.84 x 1.75)

BATHROOM

5'2" x 6'3" (1.57 x 1.91)

SECOND FLOOR

BEDROOM TWO

13'10" x 9'3" (4.22 x 2.82)

BEDROOM FOUR

8'5" x 8'2" (2.57 x 2.49)

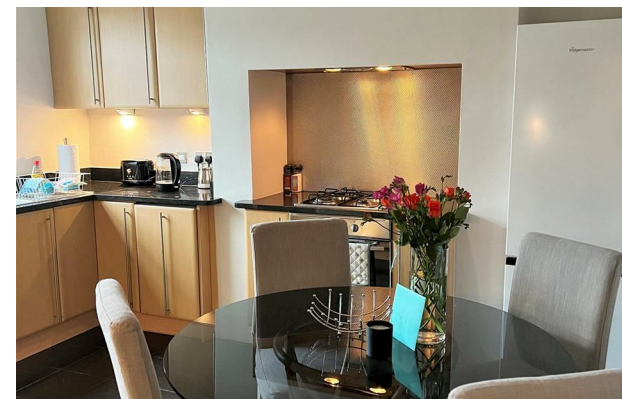
OUTSIDE

COUNCIL TAX

AGENTS NOTES

RENTAL PROCEDURE

PAYMENTS



Energy Efficiency Rating		Current	Potential
Very energy efficient - lower running costs			
(92 plus)	A		87
(81-91)	B		
(69-80)	C		
(55-68)	D	64	
(39-54)	E		
(21-38)	F		
(1-20)	G		
Not energy efficient - higher running costs			
England & Wales		EU Directive 2002/91/EC	



**WHITAKER
 CADRE** LETTING
 SPECIALISTS

1 Lower Railway Road
 Ilkley
 West Yorkshire
 LS29 8FL
 01943 328343

info@whitakercadre.com
 www.whitakercadre.com